

# Technical Report

## Technical & Derivative Report

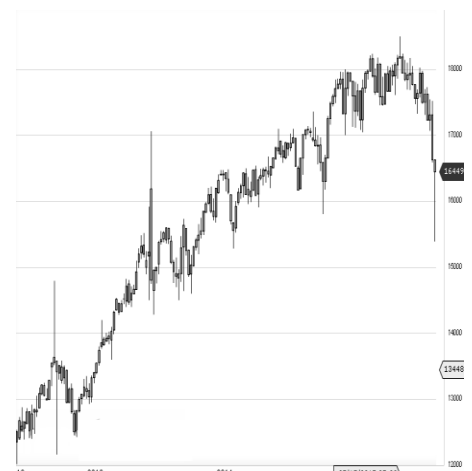
World Indices	LTP	Daily Ch(Pts)	Daily Ch(%)
Dow Jones	17779	198	1.13
Nasdaq	5095	65	1.30
S&P 500	2090	24	1.18
FTSE 100	6437	72	1.14
DAX	10831	139	1.31
Hang Seng	22919	-36	-0.16
Nikkei	18887	-15	-0.08
Sensex	27039	-213	-0.78
Nifty	8171	-61	-0.75

Commodity /Forex	LTP	Daily Ch(Pts)	Daily Ch(%)
Gold (\$/Oz)	1159.80	-16.30	-1.39
Silver (\$/Oz)	15.96	-0.33	-2.04
Copper(USD/lb.)	235.45	-0.80	-0.34
Brent Crude(USD/bbl)	48.88	-0.17	-0.35
USD/INR	64.92	-0.036	-0.06
USD/YEN	120.74	-0.35	-0.29
USD/EUR	1.0914	-0.0009	-0.08

Support/Resistance levels for Indian Equity Indices					
	S1	S2	CMP	R1	R2
Sensex	26965	26770	27039	27235	27365
Nifty	8150	8090	8171	8230	8270
Nifty (Fut)	8155	8095	8173	8235	8275

Pivot Level	
Sensex	27041
Nifty	8170

**US:** US market closed up more than 1 percent at session highs on Wednesday after the October Fed statement gave investors more confidence in the possibility of a December rate hike. Technically DJIA is presently trading at the 5th leg through Elliot wave count with negative divergence in oscillators.



## Closing Brief

Weakness in Asian stocks amid caution ahead of the outcome of a monetary policy review from the US Federal Reserve weighed on sentiment on the domestic bourses. Key indices declined for the third straight trading session.

## Technical Build up

- ❖ Bearish candle with increase in volume
- ❖ Sell crossover in oscillators.
- ❖ Upper band of Bollinger exist at 8404
- ❖ Crucial moving average of 20/50 SMA are at 8130 and 8034
- ❖ 200 SMA trend deciding level exist at 8378

## Outlook for the day

Indian equity market edged lower for third day in a row as traders preferred to book some profit and sit on the sideline ahead of US FOMC meet. Overnight officials from the Federal Reserve explicitly said they might raise short-term interest rates in December. Now October F&O expiry and Quarterly results performance are key factors for the market. On the technical front Nifty though formed a bearish candle with increase in volume but with low hairline and pullback at the fag end of yesterday's trading session can be stated as a technical pullback from 38.2% retracement (high: 9119 low:7539) with couple of moving averages synchronizes to form support around 8150. Crucial resistance continues to remain at 8450 from the upward rising channel followed by 50% retracement since March 2015 onward (high: 9119 low:7539). Hence a decisive move only above the said level would ignite positive bias in the market, till then market is likely to remain rangebound amidst the broader range of 8150-8450. On the F&O front rollover started for the month of October and the figure stands tall at 60% above normal average and close to 3-months expiry day average of 64% considering change in lot sizes from November onward and the presence of event risk of Fed meeting and Bihar election outcome. Indian VIX has increased compared to the previous day. On the option front put writers has shifted base towards the 8150 & 8000 and lower while call writing is seen around 8200 & 8250.



### Increase in OI with Increase in Price (Long Buildup)

Symbol	Prev OI	Curr OI	OI Chg (%)	Curr Pr.	Pr.Ch g (%)
LICHSGF					
IN	13495	16362	21.2	491.4	0.10
UBL	2111	2557	21.1	957	0.40
UCOBA					
NK	3018	3517	16.5	50.95	4.10
AMBUJA					
CEM	7188	7916	10.1	208.25	1.20
CIPLA	10632	11633	9.4	701	2.5

### Increase in OI with Decrease in Price (Short Buildup)

Symbol	Prev OI	Curr OI	OI Chg (%)	Curr Pr.	Pr.Chg (%)
OIL	2731	3768	38	398.60	-1.8
AMARAJ					
ABAT	2299	2943	28	915	-6.3
PFC	7252	8677	19.7	243.60	-0.7
INDUSIN					
DBK	9949	11639	17	925.0	-3.3
HAVELL					
S	2405	2808	16.8	256.25	-0.8

Nifty declined by 0.75% with Nifty future shaded 8.9 lakh shares in open interest and stock future added 88.3 lakh shares in open interest.

- Nifty PCR increased to 1.05 from 1.10
- Total Nifty Calls shaded 22.5 lakh shares in open interest.
- Total Nifty Puts shaded 5.6 lakh shares in open interest.
- Maximum open interest (Nifty) in Calls for Oct. series is at 8300 and 8000 put.
- FII's sold net Rs.731.17 (provisional), while DIIs bought net Rs.160.17 Cr in cash market.
- FII sold net Rs.1901.67 Cr. In F&O
- Securities in Ban Period: NIL

## Nifty Tracker

PARTICULARS	28/10/2015	27/10/2015	26/10/2015	23/10/2015
Spot	8171.2	8232.9	8260.55	8295.45
% Change in Spot	-0.75%	-0.33%	-0.42%	0.53%
Nifty(FUT) Oct	8173.6	8244.25	8263.6	8304.15
Nifty(FUT) Oct Vol.	546704	382756	372014	355703
Nifty(FUT) Oct - OI	10695775	15131475	16883450	18527025
Nifty(FUT) Nov	8212.3	8279.95	8299.75	8339.75
Nifty(FUT) Nov Vol.	111226	58712	43017	30346
Nifty(FUT) Nov - OI	13623750	10357725	7721325	5945475

## Trade Statistics for 28/10/2015

PARTICULARS	NO. OF CONTRACTS	TURNOVER (RS. CR.)	PUT CALL RATIO
NSE Index Futures	8,92,824	28996	-
NSE Stock Futures	19,53,864	66846	-
NSE Index Options	1,28,10,561	3,14,505.50	-
NSE Stock Options	5,80,803	17982	0.61
NSE F&O Total Turnover	1,62,38,052	428,330	0.9
NSE Cash Turnover	-	18683	-
BSE Cash Turnover	-	2,701.94	-
Total Turnover	-	449714	-

## FII Corner (F&O)

FII NET BUYING/SELLING & CHANGE IN OPEN INTEREST (Cr. Rupee)						
PARTICULARS	28/10/2015		27/10/2015		26/10/2015	
	Net Buying /Selling	Change In Open interest	Net Buying /Selling	Change In Open interest	Net Buying /Selling	Change In Open interest
Index Future	-1281	-1382	624	651	1332	23
Index option	786	-1251	-1087	-1910	-575	-1013
Stock Future	-1315	64	-645	839	-475	1303
Stock option	-92	47	62	303	-179	42
Total	-1902	-2521	-1046	-118	103	355

## Market Open Interest

ADDITION/REDUCTION IN MARKET OPEN INTEREST					
Contracts	28/10/2015	27/10/2015	26/10/2015	23/10/2015	21/10/2015
Index Futures	-329	995	-94	773	-26
Index Options	184	1575	993	451	379
Stock Futures	3117	-1823	2912	1743	1762
Stock Options	206	583	488	33	258
F&O Total	3178	1330	4299.45	3000.51	2373.16

## Nifty Option Open Interest Statistics

NIFTY OPTIONS HIGHEST ADDITION IN OPEN INTEREST						
Expiry	Strike	Option Type	Settlement Price	Volume	Open Interest	Change In OI
29-Oct-15	8150	PE	21.55	635915	1887650	912400
29-Oct-15	8200	CE	20.2	1809344	3779225	804525
29-Oct-15	8250	CE	5.75	810283	1789950	734800
26-Nov-15	8000	PE	71.65	44912	2427600	694125
29-Oct-15	8050	PE	4.55	244361	1022700	660025
29-Oct-15	8150	CE	44.25	199762	654375	580375
29-Oct-15	8300	CE	1.45	1611051	5353950	564875
26-Nov-15	8300	CE	98.8	31561	1533450	484350
26-Nov-15	8400	CE	62.4	32663	1389600	385800
26-Nov-15	9500	PE	1267.65	4872	545250	320625

NIFTY OPTIONS HIGHEST REDUCTION IN OPEN INTEREST						
Expiry	Strike	Option Type	Settlement Price	Volume	Open Interest	Change In OI
29-Oct-15	8200	PE	45.55	1492857	2824900	-2109725
29-Oct-15	8300	PE	121.45	325117	1072150	-789100
29-Oct-15	8400	CE	0.5	392720	3873200	-681675
29-Oct-15	8250	PE	77.05	165303	489200	-403650
29-Oct-15	8000	CE	171.8	56598	1101625	-338150
29-Oct-15	8000	PE	2.35	539432	4513750	-337325
29-Oct-15	8500	CE	0.35	94533	3032400	-326150
29-Oct-15	8350	CE	0.7	310698	833825	-289725
29-Oct-15	9000	PE	826	13615	139150	-253650
29-Oct-15	7000	CE	1170.05	13867	306475	-249375

## Stock Option Open Interest Statistics

STOCK OPTIONS WITH HIGHEST ADDITION IN OPEN INTEREST							
Symbol	Expiry	Strike	Option Type	Settl. Price	Volume	Open Interest	Change in OI
JPASSOCIAT	26-Nov-15	7.5	CE	5.3	45	2160000	2160000
IFCI	29-Oct-15	27.5	PE	0.2	1083	4904000	1736000
UNITECH	26-Nov-15	10	CE	0.25	38	11165000	1617000
IFCI	26-Nov-15	30	CE	1.55	261	4240000	1300000
AXISBANK	29-Oct-15	500	CE	0.85	13064	1520000	1165000
UNITECH	29-Oct-15	7.5	PE	0.1	229	5632000	858000
ASHOKLEY	26-Nov-15	95	CE	2.95	196	1813000	791000
AXISBANK	29-Oct-15	490	CE	2.8	8047	761000	714500
IFCI	26-Nov-15	35	CE	0.55	91	2140000	680000
JPASSOCIAT	26-Nov-15	12.5	CE	1.4	13	720000	624000

STOCK OPTIONS WITH HIGHEST REDUCTION IN OPEN INTEREST							
Symbol	Expiry	Strike	Option Type	Settl. Price	Volume	Open Int.	Change in OI
JPASSOCIAT	29-Oct-15	12.5	PE	0.15	588	8992000	-1928000
IFCI	29-Oct-15	30	CE	0.2	3593	7984000	-1568000
JPASSOCIAT	29-Oct-15	7.5	CE	5.4	265	816000	-1384000
DISHTV	29-Oct-15	110	CE	0.95	2550	3840000	-1096000
UNITECH	29-Oct-15	7.5	CE	0.2	321	11165000	-792000
IFCI	29-Oct-15	27.5	CE	1.1	1286	4976000	-704000
IFCI	29-Oct-15	32.5	CE	0.05	648	4120000	-552000
ICICIBANK	29-Oct-15	280	PE	8.2	1998	533000	-533000
AXISBANK	29-Oct-15	500	PE	17.4	3359	372000	-501500
ICICIBANK	29-Oct-15	290	CE	0.15	1633	1874000	-472000

### Disclosure

- The Research Analysts and /or Ashika Stock Broking Limited do hereby certify that all the views expressed in this research report accurately reflect their views about the subject issuer(s) or securities. Moreover, they also certify the followings:-
- The Research Analyst or Ashika Stock Broking Limited or his/its Associates or his/its relative, has any financial interest in the subject company(ies) covered in this report. **No**
- The Research Analyst or Ashika Stock Broking Limited or his/its Associates or his/its relative, have actual/beneficial ownership of 1% or more in the subject company, at the end of the month immediately preceding the date of the publication of the research report. **No**
- The Research Analyst or Ashika Stock Broking Limited or his/its Associates or his/its relatives has any material conflict of interest at the time of publication of the research report. **No**
- The Research Analyst or Ashika Stock Broking Limited or his/its Associates have received compensation for investment banking or merchant banking or brokerage services or for product other than for investment banking or merchant banking or brokerage services from the companies covered in this report in the past 12 months. **No**
- The Research Analyst or Ashika Stock Broking Limited or his/its Associates have managed or co managed in the previous 12 months any private or public offering of securities for the company(ies) covered in this report. **No**
- The Research Analyst or Ashika Stock Broking Limited or his/its Associates have received any compensation or other benefits from the company(ies) covered in this report or any third party in connection with the Research Report. **No**
- The Research Analyst has served as an officer, director or employee of the company(ies) covered in the research report. **No**
- The Research Analyst or Ashika Stock Broking Limited has been engaged in Market making activity of the company(ies) covered in the research report. **No**

### Disclaimer

This report is for the personal information of the authorized recipient and does not construe to be any investment, legal or taxation advice to you. Ashika Stock Broking Ltd. is not soliciting any action based upon it. This report is not for public distribution and has been furnished to you solely for your information and should not be reproduced or redistributed to any other person in any form. The report is based upon information that we consider reliable, but we do not represent that it is accurate or complete, and it should not be relied upon such. Ashika Stock Broking Ltd. or any of its affiliates or employees shall not be in anyway responsible for any loss or damage that may arise to any person from any inadvertent error in the information contained in this report. Ashika Stock Broking Ltd., or any of its affiliates or employees do not provide, at any time, any express or implied warranty of any kind, regarding any matter pertaining to this report, including without limitation the implied warranties of merchantability, fitness for a particular purpose, and non-infringement. The recipients of this report should rely on their own investigations.