

Technical Report

Closing Brief

Key benchmark indices logged modest gains in an intensely choppy trading session. The Sensex settled below the psychological 26,000 mark after hitting one week high above that level in mid-afternoon trade. Gains triggered by a steeper-than-expected 50 basis points rate cut by the RBI in its fourth bi-monthly monetary.

Technical Build up

- ❖ Bullish candle with increase in volume.
- ❖ Buy crossover in oscillators.
- ❖ Upper band of Bollinger exist at 8022
- ❖ Crucial moving average of 20/50 SMA are at 7816 and 8155
- ❖ 200 SMA trend deciding level exist at 8384

Outlook for the day

Indian equity market ended the session on a higher note after RBI Governor Raghuram Rajan cut the interest rates more than expected. On the technical front Nifty continues to remain confined within a range and on the upside now 8050 would remain a strong resistance level for the coming few weeks. Since mid September onward couple of bearish candle formation might propel bulls to remain cautious and lower base of 7500 would remain a crucial support level for the market. On the F&O front long build up were seen with rise in OI followed by increase in price. Premium and CoC too increased marginally. IndiaVIX too decreased marginally. On the option front ATM strike price call option of 7900 & 8000 saw long addition while higher strike price put option of 8200 & 8400 saw writing activity. However sentiment might seem to be position but upside might be limited as writing activity were also seen in higher strike price call option of 8400 as well.



Increase in OI with Increase in Price (Long Buildup)					
Symbol	Prev OI	Curr OI	OI Chg (%)	Curr Pr.	Pr.Ch g (%)
NCC	154	383	148.7	73.25	4.80
DHFL	3873	4645	19.9	216.2	3.40
DLF	14163	16760	18.3	134.45	3.70
APOLLO HOSP	2151	2527	17.5	1450.0	2.80
JSWENE	2052	2374	15.7	88.3	1.30

Increase in OI with Decrease in Price (Short Buildup)					
Symbol	Prev OI	Curr OI	OI Chg (%)	Curr Pr.	Pr.Chg (%)
INFRATE L	139	445	220.1	358.0	-5.6
MARICO	39	87	123.1	398.0	-0.5
AXISBA NK	54249	61270	12.9	507.25	-0.5
ABIRLA	4189	4654	11.1	2110	-2.4
NUVO	4189	4654	11.1	2110	-2.4
PFC	7627	8451	10.8	228.7	-0.7

Technical & Derivative Report

World Indices	LTP	Daily Ch(Pts)	Daily Ch(%)
Dow Jones	16049	47	0.30
Nasdaq	4517	-26	-0.59
S&P 500	1884	2	0.12
FTSE 100	5909	-49	-0.83
DAX	9450	-33	-0.35
Hang Seng	20823	266	1.30
Nikkei	17272	341	2.02
Sensex	25778	161	0.63
Nifty	7843	47	0.61

Commodity /Forex	LTP	Daily Ch(Pts)	Daily Ch(%)
Gold (\$/Oz)	1126.60	-0.20	-0.02
Silver (\$/Oz)	14.59	0.02	0.12
Copper(USD/lb.)	226.05	0.90	0.40
Brent Crude(USD/bbl)	47.88	-0.35	-0.73
USD/INR	65.95	-0.09	-0.14
USD/YEN	120.04	0.30	0.25
USD/EUR	1.1242	-0.0007	-0.06

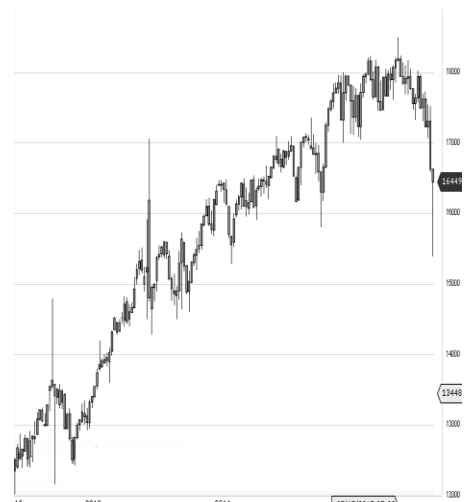
Support/Resistance levels for Indian Equity Indices

	S1	S2	CMP	R1	R2
Sensex	25635	25470	25778	25900	26035
Nifty	7800	7750	7843	7880	7920
Nifty (Fut)	7835	7785	7875	7915	7955

Pivot Level

Sensex	25706
Nifty	7820

US: US market closed mixed Tuesday, attempting to stabilize after a sharp sell-off, as commodities recovered slightly but biotech stocks failed to hold gains. Technically DJIA is presently trading at the 5th leg through Elliot wave count with negative divergence in oscillators.



Nifty gained by 0.61% with Nifty future added 3.5 lakh shares in open interest and stock future added 530.2 lakh shares in open interest.

- Nifty PCR increased to 0.91 from 0.90
- Total Nifty Calls added 43.0 lakh shares in open interest.
- Total Nifty Puts added 45.1 lakh shares in open interest.
- Maximum open interest (Nifty) in Calls for Oct. series is at 8200 and 7500 put.
- FII's sold net Rs.1112.59 (provisional), while DIIs bought net Rs.876.2 Cr in cash market.
- FII sold net Rs.3246.35 Cr. In F&O
- Securities in Ban Period: NIL

Nifty Tracker

PARTICULARS	29/09/2015	28/09/2015	24/09/2015	23/09/2015
Spot	7843.3	7795.7	7868.5	7845.95
% Change in Spot	0.61%	-0.93%	0.29%	0.43%
Nifty(FUT) Oct	7875.85	7825.5	7895.7	7888.75
Nifty(FUT) Oct Vol.	925370	411586	436425	316497
Nifty(FUT) Oct - OI	18824900	18599050	18368400	14513300
Nifty(FUT) Nov	7914	7860.7	7929.25	0
Nifty(FUT) Nov Vol.	7826	3933	2332	0
Nifty(FUT) Nov - OI	901950	831825	792075	0

Trade Statistics for 29/09/2015

PARTICULARS	NO. OF CONTRACTS	TURNOVER (RS. CR.)	PUT CALL RATIO
NSE Index Futures	12,80,529	33617	-
NSE Stock Futures	11,13,149	29066	-
NSE Index Options	89,81,540	1,99,643.85	-
NSE Stock Options	4,83,302	12578	0.5
NSE F&O Total Turnover	1,18,58,521	274,905	0.85
NSE Cash Turnover	-	20554	-
BSE Cash Turnover	-	3,053.09	-
Total Turnover	-	298512	-

FII Corner (F&O)

FII NET BUYING/SELLING & CHANGE IN OPEN INTEREST (Cr. Rupee)						
PARTICULARS	29/09/2015		28/09/2015		24/09/2015	
	Net Buying /Selling	Change In Open interest	Net Buying /Selling	Change In Open interest	Net Buying /Selling	Change In Open interest
Index Future	-519	540	9	-5	-633	-15953
Index option	3615	5070	1706	2946	3643	-49882
Stock Future	135	990	25	116	39	-9437
Stock option	16	270	97	736	-39	-2283
Total	3247	6871	1837	3792	3010	-77555

Market Open Interest

ADDITION/REDUCTION IN MARKET OPEN INTEREST					
Contracts	29/09/2015	28/09/2015	24/09/2015	23/09/2015	22/09/2015
Index Futures	1058	-11309	513	753	2980
Index Options	1575	-12227	1831	761	-180
Stock Futures	7828	-68911	8979	2609	5325
Stock Options	1417	-10183	864	218	235
F&O Total	11878	-102630	12187.18	4341.14	8360.09

Nifty Option Open Interest Statistics

NIFTY OPTIONS HIGHEST ADDITION IN OPEN INTEREST						
Expiry	Strike	Option Type	Settlement Price	Volume	Open Interest	Change In OI
29-Oct-15	8000	CE	117.35	868893	3702100	827675
29-Oct-15	7900	CE	167.2	534740	2297400	591200
29-Oct-15	7700	PE	121.1	481641	2523425	535475
29-Oct-15	7000	PE	16.3	185904	1874850	514600
29-Oct-15	8200	CE	48.75	535463	3734975	490050
29-Oct-15	7500	PE	72.65	662743	4120075	417000
29-Oct-15	7200	PE	30.15	256049	1613825	408450
29-Oct-15	7600	PE	94	451187	2892000	408450
29-Oct-15	8100	CE	78.4	630907	2707775	404650
29-Oct-15	7800	CE	224.85	345757	1898200	391875

NIFTY OPTIONS HIGHEST REDUCTION IN OPEN INTEREST						
Expiry	Strike	Option Type	Settlement Price	Volume	Open Interest	Change In OI
29-Oct-15	8400	CE	16.4	297131	1883125	-155375
31-Dec-15	8000	PE	308.7	4033	2894275	-125100
29-Oct-15	8500	PE	613.35	4431	747325	-23250
29-Oct-15	8200	PE	364.85	7426	868775	-14000
31-Dec-15	9000	CE	22.5	6927	2003800	-11025
29-Oct-15	8100	PE	299.55	16499	760850	-10925
26-Nov-15	8700	CE	16.75	708	101475	-10725
31-Dec-15	8500	PE	625.1	454	694300	-9250
29-Oct-15	7100	CE	778.3	582	370275	-6100
26-Nov-15	8900	CE	9.45	210	25275	-4575

Stock Option Open Interest Statistics

STOCK OPTIONS WITH HIGHEST ADDITION IN OPEN INTEREST							
Symbol	Expiry	Strike	Option Type	Settl. Price	Volume	Open Interest	Change in OI
JPASSOCIAT	29-Oct-15	12.5	CE	0.45	2259	13432000	7784000
UNITECH	29-Oct-15	7.5	CE	0.3	574	11044000	2486000
IDFC	29-Oct-15	150	CE	0.1	5122	5214000	2460000
IDFC	29-Oct-15	145	CE	0.2	5542	2776000	1430000
IDBI	29-Oct-15	90	CE	2.75	1167	1240000	1240000
JPASSOCIAT	29-Oct-15	10	CE	1.65	433	1992000	1032000
DLF	29-Oct-15	150	CE	3.2	2506	1828000	1030000
HDIL	29-Oct-15	75	CE	5.05	2273	1878000	1008000
RCOM	29-Oct-15	70	CE	1.4	810	2944000	996000
HINDALCO	29-Oct-15	75	CE	1.4	1025	1436000	812000

STOCK OPTIONS WITH HIGHEST REDUCTION IN OPEN INTEREST							
Symbol	Expiry	Strike	Option Type	Settl. Price	Volume	Open Int.	Change in OI
COALINDIA	29-Oct-15	310	CE	14.7	409	113000	-141000
TATAMOTORS	29-Oct-15	300	PE	20.35	1119	426000	-127500
IDBI	29-Oct-15	70	CE	12.95	61	428000	-88000
IDBI	29-Oct-15	80	CE	6.5	1469	1240000	-88000
HDIL	29-Oct-15	65	CE	10.35	439	298000	-78000
VEDL	29-Oct-15	90	PE	7.35	266	248000	-76000
PTC	29-Oct-15	55	CE	5.35	60	84000	-72000
AMBUJACEM	29-Oct-15	200	PE	6.1	196	63000	-69000
IDBI	29-Oct-15	75	CE	9.5	339	816000	-64000
HDIL	29-Oct-15	60	CE	14.45	170	158000	-60000

Disclosure

- The Research Analysts and /or Ashika Stock Broking Limited do hereby certify that all the views expressed in this research report accurately reflect their views about the subject issuer(s) or securities. Moreover, they also certify the followings:-
- The Research Analyst or Ashika Stock Broking Limited or his/its Associates or his/its relative, has any financial interest in the subject company(ies) covered in this report. **No**
- The Research Analyst or Ashika Stock Broking Limited or his/its Associates or his/its relative, have actual/beneficial ownership of 1% or more in the subject company, at the end of the month immediately preceding the date of the publication of the research report. **No**
- The Research Analyst or Ashika Stock Broking Limited or his/its Associates or his/its relatives has any material conflict of interest at the time of publication of the research report. **No**
- The Research Analyst or Ashika Stock Broking Limited or his/its Associates have received compensation for investment banking or merchant banking or brokerage services or for product other than for investment banking or merchant banking or brokerage services from the companies covered in this report in the past 12 months. **No**
- The Research Analyst or Ashika Stock Broking Limited or his/its Associates have managed or co managed in the previous 12 months any private or public offering of securities for the company(ies) covered in this report. **No**
- The Research Analyst or Ashika Stock Broking Limited or his/its Associates have received any compensation or other benefits from the company(ies) covered in this report or any third party in connection with the Research Report. **No**
- The Research Analyst has served as an officer, director or employee of the company(ies) covered in the research report. **No**
- The Research Analyst or Ashika Stock Broking Limited has been engaged in Market making activity of the company(ies) covered in the research report. **No**

Disclaimer

This report is for the personal information of the authorized recipient and does not construe to be any investment, legal or taxation advice to you. Ashika Stock Broking Ltd. is not soliciting any action based upon it. This report is not for public distribution and has been furnished to you solely for your information and should not be reproduced or redistributed to any other person in any form. The report is based upon information that we consider reliable, but we do not represent that it is accurate or complete, and it should not be relied upon such. Ashika Stock Broking Ltd. or any of its affiliates or employees shall not be in anyway responsible for any loss or damage that may arise to any person from any inadvertent error in the information contained in this report. Ashika Stock Broking Ltd., or any of its affiliates or employees do not provide, at any time, any express or implied warranty of any kind, regarding any matter pertaining to this report, including without limitation the implied warranties of merchantability, fitness for a particular purpose, and non-infringement. The recipients of this report should rely on their own investigations.